

## Top Layer's IPS 5500- 150 E-Series Appliance

**Summary:** The IPS 5500-150 E-Series Appliance offers top-notch network protection and it wins our Editor's Choice Award for value and protection.

**Price:** 35,000

[www.TopLayer.com](http://www.TopLayer.com)

★★★★★



An effective Intrusion Protection System, or IPS Appliance, can often provide the necessary resistance against network invasions. Top Layer states that protection of the IPS 5500 comes in three different areas that include rate based protection, a firewall with stateful inspection, and defense against worms and other malicious content threats. It also incorporates expanded protection for server and client/desktop protection. We think you'll be impressed with the performance of the IPS 5000 appliance that receives our Editor's Choice Award for value and protection.

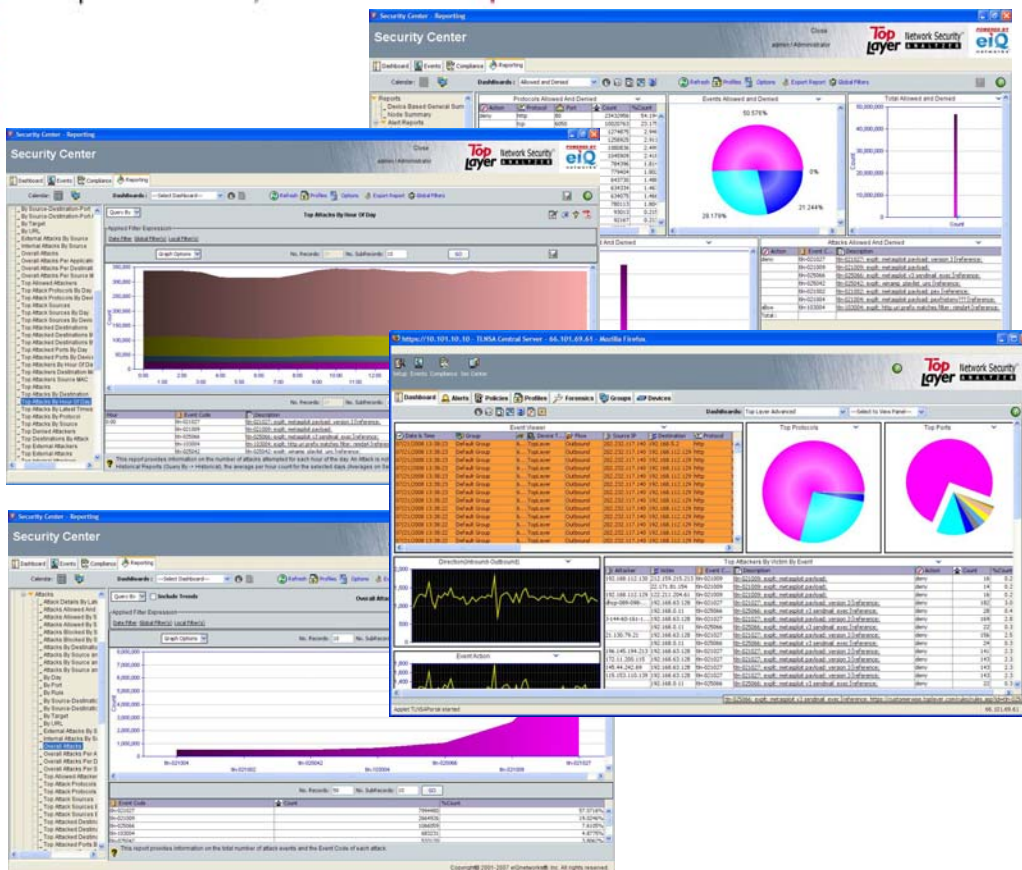
The company produces three versions of the IPS 5500. What you need will depend on the size of your network and the amount of throughput that will be countered by the appliance. Each model does offer four 10/100BaseTEthernet ports, four GBIC Gigabit ports and two 1000BaseSX ports and other connections for use with a console and USB equipment. A single hot swappable power supply is standard with the appliance however it can be ordered with a dual power supply if needed for your particular network.

We looked at the 150E model of the series, although you may also wish to look at the models that include the 500E (2Gbps throughput) and 1000E (4Gbps throughput) with higher ratings in other areas in comparison to the

## Top Layer's IPS 5500- 150 E-Series Appliance

150E. The unit's firewall, which includes stateful inspection, has a throughput of 600+ Mbps with the capacity to handle up to half a million sessions at any given time. This should be more than enough for any company connecting to the Internet through a cable or DSL provider. Testing it in this type of environment it was able to accurately block 100-percent of the attempts of worms, virus and other

threats from various sources outside the perimeter with the several different models of Top Layer's IPS 5500 appliance. The IPS 5500-150 E-Series has a starting price of \$35,000 and other pricing available depending on the model. There's more information and technical specifications on all models on the company's web site that is located at [www.TopLayer.com](http://www.TopLayer.com)



malicious content into our network.

The IPS 5500's Network Security Analyzer can provide administrators with security event management, flexible reporting and real time alerting to ensure that personnel are up to date with the most recent threats that could be encountered within the network.

Provide your network with a high level of defense against incoming

